



The 14th Congress on SLE &
The 6th CORA Congress
JOINT VIRTUAL EVENT

Italian Society of Rheumatology (SIR) grant winners

6-9 October 2021

Italian Society of Rheumatology (SIR) grant winners

Granted to Italian SIR members (younger than 40 years old) which have received a high score and found to be particularly meritorious by the Scientific Committee.

- To read the abstracts, please click on the Poster Gallery in the Virtual platform*



Margherita Zen	PROGNOSIS OF PATIENTS WITH PROLIFERATIVE LUPUS NEPHRITIS WHO DISCONTINUED IMMUNOSUPPRESSIVE THERAPY AFTER REMISSION ACHIEVEMENT	LUPUS
Sara Ferrigno	RELATIONSHIP BETWEEN RETINAL MICROVASCULAR ALTERATIONS ASSESSED BY OCT-ANGIOGRAPHY AND KIDNEY INVOLVEMENT IN SYSTEMIC LUPUS ERYTHEMATOSUS: A PILOT STUDY	LUPUS
Giulio Olivieri	MYCOPHENOLATE MOFETIL IN SYSTEMIC LUPUS ERYTHEMATOSUS PATIENTS: FIVE-YEARS DRUG SURVIVAL IN RENAL AND NON-RENAL INVOLVEMENT	LUPUS
Chiara Scirocco	COVID-19 PROGNOSIS IS WORSE IN MALE COMPARED TO FEMALE PATIENTS WITH SYSTEMIC LUPUS ERYTHEMATOSUS: RESULTS FROM THE CONTROL-19 STUDY BY THE ITALIAN SOCIETY OF RHEUMATOLOGY	LUPUS
Francesca Crisafulli	THE USE OF BELIMUMAB DURING PREGNANCY IN SYSTEMIC LUPUS ERYTHEMATOSUS PATIENTS	LUPUS
Alessandro Giollo	ASSESSMENT OF MYOCARDIAL FIBROSIS USING ADVANCED ECHOCARDIOGRAPHY IN PATIENTS WITH SYSTEMIC LUPUS ERYTHEMATOSUS: A PILOT STUDY	LUPUS
Maddalena Larosa	PHYSICIAN'S OPINION AND OUTCOME OF PREGNANCIES: PRELIMINARY RESULTS FROM THE FRENCH MULTICENTRE PROSPECTIVE GR2 STUDY	LUPUS
Roberto Depascale	PREDICTORS OF MUSCULOSKELETAL AND MUCOCUTANEOUS RESPONSE TO BELIMUMAB IN PATIENTS AFFECTED WITH SYSTEMIC LUPUS ERYTHEMATOSUS: DATA FROM A LARGE MULTICENTRIC NATIONWIDE COHORT	LUPUS
Francesco Natalucci	APPLICATION OF CLUSTER ANALYSIS TO IDENTIFY DISEASE PHENOTYPE ASSOCIATED WITH EROSIIVE ARTHRITIS IN SYSTEMIC LUPUS ERYTHEMATOSUS	LUPUS
Elisabetta Chessa	TELEMEDICINE FOR TIGHT MONITORING OF SYSTEMIC LUPUS ERYTHEMATOSUS PATIENTS: VIDEO-VISITING SHOWED GOOD SPECIFICITY BUT LOW SENSITIVITY IN TREATMENT DECISIONS	LUPUS

Dina Zucchi	LOW DOSE ASPIRIN AND PREGNANCY OUTCOME IN SLE PATIENTS WITHOUT HISTORY OF RENAL INVOLVEMENT AND WITHOUT APL: RESULTS FROM A MULTICENTRE STUDY	LUPUS
Valeria Orefice	ENDOTHELIAL FUNCTION IN SYSTEMIC LUPUS ERYTHEMATOSUS PATIENTS: IMPACT OF CAFFEINE CONSUMPTION ON ENDOTHELIAL PROGENITOR CELLS	LUPUS
Luca Moroni	POST-TRAUMATIC STRESS DISORDER AND QUALITY OF LIFE IN SYSTEMIC LUPUS ERYTHEMATOSUS. A CROSS SECTIONAL WEB SURVEY-BASED STUDY.	LUPUS
Liala Moschetti	GENDER DIFFERENCES IN THROMBOTIC PRIMARY ANTIPHOSPHOLIPID SYNDROME IN A LARGE COHORT OF PATIENTS FROM FOUR EUROPEAN CENTERS	LUPUS
Serena Fasano	EFFECT OF LONG TERM HYDROXYCHLOROQUINE THERAPY ON BIOMARKERS OF ENDOTHELIAL FUNCTION IN SYSTEMIC LUPUS ERYTHEMATOSUS	LUPUS
Micaela Fredi	TAPERING BELIMUMAB IN PATIENTS WITH SYSTEMIC LUPUS ERYTHEMATOSUS: A SINGLE CENTER EXPERIENCE	LUPUS
Giovanni Orsolini	IMPACT OF FRAGILITY FRACTURE ON QUALITY OF LIFE OF A COHORT OF SYSTEMIC LUPUS ERYTHEMATOSUS PATIENTS	LUPUS
Enrico Fuzzi	ANTIMALARIAL THERAPY IN SYSTEMIC LUPUS ERYTHEMATOSUS: PREVALENCE AND DISCONTINUATION IN A REAL-WORLD COHORT	LUPUS
Elena Elefante	ANXIETY AND DEPRESSION IN A MONOCENTRIC COHORT OF PATIENTS WITH SYSTEMIC LUPUS ERYTHEMATOSUS: ANALYSIS OF PREVALENCE, MAIN DETERMINANTS AND IMPACT ON QUALITY OF LIFE	LUPUS
Silvia Piantoni	CIRCULATING B-CELL RELATED FACTORS BELONGING TO THE TNF/TNFR SUPERFAMILY ARE HIGHER IN SYSTEMIC LUPUS ERYTHEMATOSUS WHEN COMPARED WITH ANTIPHOSPHOLIPID-RELATED SYNDROMES.	LUPUS





Margherita Zen



Sara Ferrigno



Giulio Olivieri



Chiara Scirocco



Francesca Crisafulli



Alessandro Giollo



Maddalena Larosa



Roberto Depascale



Francesco Natalucci

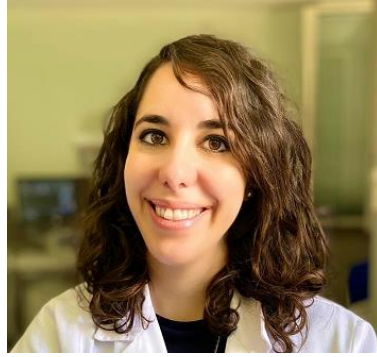


Elisabetta Chessa





Dina Zucchi



Valeria Orefice



Luca Moroni



Liala Moschetti



Serena Fasano



Micaela Fredi



Giovanni Orsolini



Enrico Fuzzi



Elena Elefante



Silvia Piantoni



Daniele Lini	LOW PRECONCEPTION COMPLEMENT IS ASSOCIATED WITH ADVERSE PREGNANCY OUTCOMES: A MULTICENTER STUDY OF 260 PREGNANCIES IN 197 WOMEN WITH ANTIPHOSPHOLIPID SYNDROME OR ANTIPHOSPHOLIPID ANTIBODIES CARRIERS	CORA
Francesco Benvenuti	FREQUENCY OF DISEASE PROGRESSION AFTER IMMUNOSUPPRESSIVE WITHDRAWAL IN A RETROSPECTIVE COHORT OF SYSTEMIC SCLEROSIS PATENTS	CORA
Augusta Ortolan	SECUKINUMAB DRUG SURVIVAL IN PSORIASIS AND PSORIATIC ARTHRITIS PATIENTS: A 24-MONTH REAL-LIFE STUDY	CORA
Francesca Regola	LARGE VESSEL- GIANT CELL ARTERITIS: A DIAGNOSTIC CHALLENGE	CORA
Roberto Padoan	INCIDENCE OF CANCER IN EOSINOPHILIC GRANULOMATOSIS WITH POLYANGIITIS: A SINGLE CENTER STUDY	CORA
Mariele Gatto	CHANGES IN CIRCULATING B CELL LEVELS AND IMMUNOPHENOTYPE ARE ASSOCIATED WITH DEVELOPMENT OF ARTHRITIS FOLLOWING TREATMENT WITH CHECKPOINT INHIBITORS	CORA
Giacomo Cozzi	THE GENETIC CONTRIBUTION TO DRUG RESPONSE IN SPONDYLOARTHRITIS: A SYSTEMATIC LITERATURE REVIEW	CORA
Chiara Franco	EVALUATION OF EXTRACELLULAR VESICLES AS POTENTIAL BIOMARKERS OF MYOSITIS	CORA
Debora Campaniello	HEARING LOSS IN PATIENTS WITH ANCA-ASSOCIATED VASCULITIS	CORA
Giovanni Adami	ASSOCIATION BETWEEN ENVIRONMENTAL AIR POLLUTION AND OSTEOPOROSIS, A POPULATION-BASED COHORT ANALYSIS	CORA





Daniele Lini



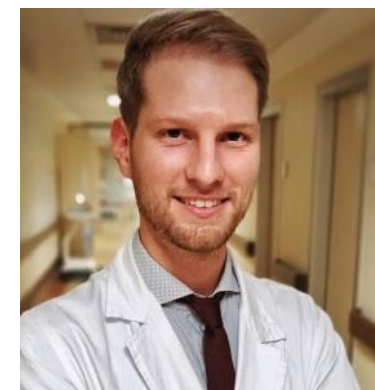
Francesco Benvenuti



Augusta Ortolan



Francesca Regola



Roberto Padoan



Mariele Gatto



Chiara Franco



Giacomo Cozzi



Debora Campaniello



Giovanni Adami

